

# Electrodeless High Bay Series



## Features : 03-022

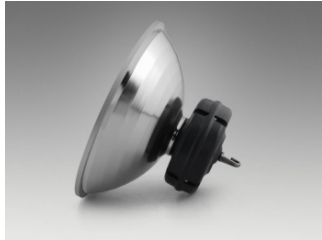
Protection class: IP54

High Pressure die-casting aluminium electrical round box

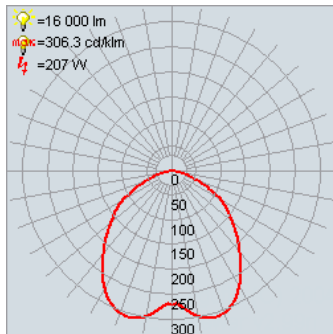
Electrostatic spray surface, high reflectivity, stable optical properties

Toughened glass with high light transmission

Polished high purity aluminium oxide reflector



## Photometrics



## Technical details

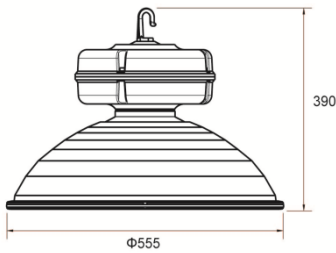
### Lamp Specifications

Lamp Wattage	Luminous Flux	Pupil Lumens	CRI	Colour Temp.	Lamp life span
80W	6400	10368	80-85	5000 k	80,000 hrs
120 W	9600	15550			
150 W	12000	19440			
200 W	16000	25920			

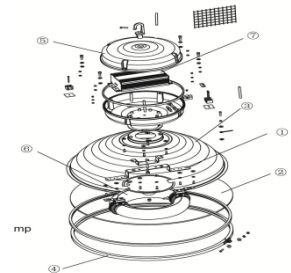
### Ballast Specifications

System Wattage	Input Voltage	Input Current (amps)	THD	Ambient temp.	Power factor
80W		0.40	<10%	-10 to 30 deg C	>0.98
120 W	110 – 277	0.59			
150 W	Vac	0.74			
200 W		0.95			

## Dimensions



Wattage	Dimensions
80W 120W 150W 200W	550 x 400
Estimated Weight : 5KG	



## Applications



Industrial factory  
Warehouses  
Stadium  
Hypermarkets,  
Stadium  
Other indoor environments



## Ordering Information

Series					
<b>Eco Green 03-022</b>					
	<b>Wattage</b>		<b>Color Temp</b>	<b>Cover</b>	<b>Special</b>
	<b>80W</b>		<b>50-5000k</b>	<b>TG-Tempered Glass</b>	
	<b>120W</b>		35-3500k	PC-Polycarbonate Clear	
	<b>150W</b>	<b>Voltage</b>	65-6500k		
	<b>200W</b>	<b>110 – 110to277V</b>			
		<b>200 – 200to240V</b>			



**Bold = Standard**

Grey\* = Upgrade options available upon request

**Example : Eco Green 03-022-200-110-50-TG**

## Mounting Method / Installation Procedures



Unload the four buckles with slotted screwdriver, remove the metal wire net.



Put the glass into the hoop and Wrap the glass and cover edge together with rubber seal.



Tighten the hook on the ballast housing of the fixture; feed the power line into the ballast housing through the opening of the hook, cover the power line with 2 pcs of the rubber seal rings.



Unscrew the screw which on the hoop.



Unscrew the hoop and take out the hoop, rubber seal and glass.



Cover the hoop, use the screw to fasten the hoop (Attention: the opening of the hoop is on the opposite of the seal tape connection, and if necessary beat around the hoop to make it tightly.)



Put on the washers and fasten the nut, the exposed power line is around 250mm long.



Install the hoop on the right hole position



Take out the anti-vibration pad beside the bulb with your hand, and at the meantime you need to make the bulb into normal state, not skew.



Unscrew the screws which on the Electrical Box cover with screwdriver.



Connect the power cord into the 3-row 6-hole connecting terminal according to the connecting label. Pin the power cord with the pin board.



Tighten the screw which on the hoop to avoid the loss angle iron parameters (Size: 4cm x 10cm, Aperture: ≥12mm, Bear load: ≥ 5 times the weight of lamps and lanterns)

