



Features : NPT-KH20

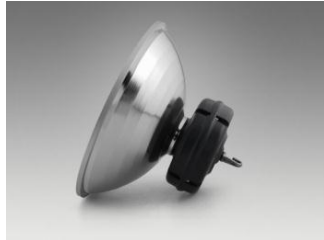
Protection class: IP54

High Pressure die-casting aluminium electrical round box

Electrostatic spray surface, high reflectivity, stable optical properties

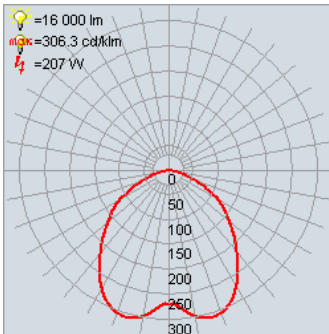
Toughened glass with high light transmission

Polished high purity aluminium oxide reflector



Photometrics

Technical details



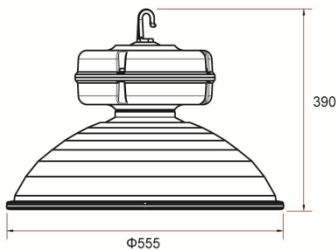
Lamp Specifications

Lamp Wattage	Luminous Flux	Pupil Lumens	CRI	Colour Temp.	Lamp life span
80W	6400	10368	80-85	5000 k	80,000 hrs
120 W	9600	15550			
150 W	12000	19440			
200 W	16000	25920			

Ballast Specifications

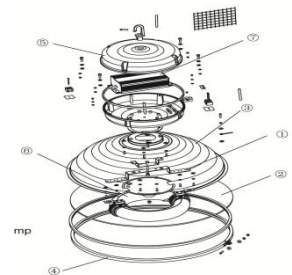
System Wattage	Input Voltage	Input Current (amps)	THD	Ambient temp.	Power factor
80W		0.40	<10%	-10 to 30 deg C	>0.98
120 W	110 – 277	0.59			
150 W	Vac	0.74			
200 W		0.95			

Dimensions



Wattage	Dimensions
80W 120W 150W 200W	550 x 400

Estimated Weight : 5KG



Applications



Industrial factory
Warehouses
Stadium
Hypermarkets,
Stadium
Other indoor environments

วิริยะ วัชรพาน

Email: watchara@thaipolymer.co.th

Mobile: 089 119 1116



Ordering Information

Series					
NPT-HK20					
	Wattage		Color Temp	Cover	Special
	80W 120W 150W 200W	Voltage	50-5000k 35-3500k 65-6500k	TG-Tempered Glass PC-Polycarbonate Clear	
		110 – 110to277V 200 – 200to240V			



Bold = Standard

Grey* = Upgrade options available upon request

Example : NPT-HK20-200-200-50-TG

Mounting Method / Installation Procedures



Unload the four buckles with slotted screwdriver, remove the metal wire net.



Unscrew the hoop and take out the hoop, rubber seal and glass.



Take out the anti-vibration pad beside the bulb with your hand, and at the meantime you need to make the bulb into normal state, not skew.



Put the glass into the hoop and Wrap the glass and cover edge together with rubber seal.



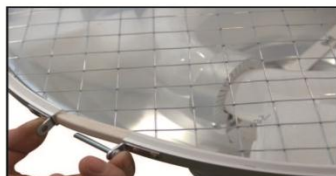
Cover the hoop, use the screw to fasten the hoop (Attention: the opening of the hoop is on the opposite of the seal tape connection, and if necessary beat around the hoop to make it tightly.)



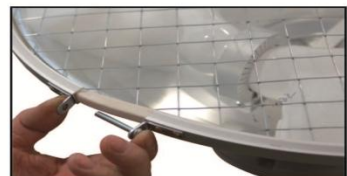
Unscrew the screws which on the Electrical Box cover with screwdriver.



Tighten the hook on the ballast housing of the fixture, feed the power line into the ballast housing through the opening of the hook, cover the power line with 2 pcs of the rubber seal rings.



Put on the washers and fasten the nut, the exposed power line is around 250mm long.



Connect the power cord into the 3-row 6-hole connecting terminal according to the connecting label. Pin the power cord with the pin board.



Unscrew the screw which on the hoop.



Install the hoop on the right hole position



Tighten the screw which on the hoop to avoid the loss angle iron parameters (Size: 4cm×4cm×10cm, Aperture: ≥12mm, Bear load: ≥ 5 times the weight of lamps and lanterns)

วิริยะ วัชรปาน

Email: watchara@thaiolymer.co.th

Mobile: 089 119 1116

